



LITESPHERE 2.0

AND

GINA



1900K



2700K



3000K



3500K

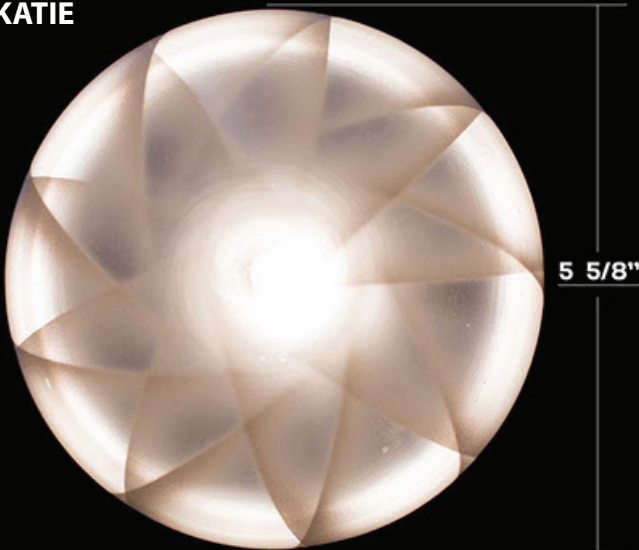


4000K



5000K

KATIE



1900K



2700K



3000K



3500K

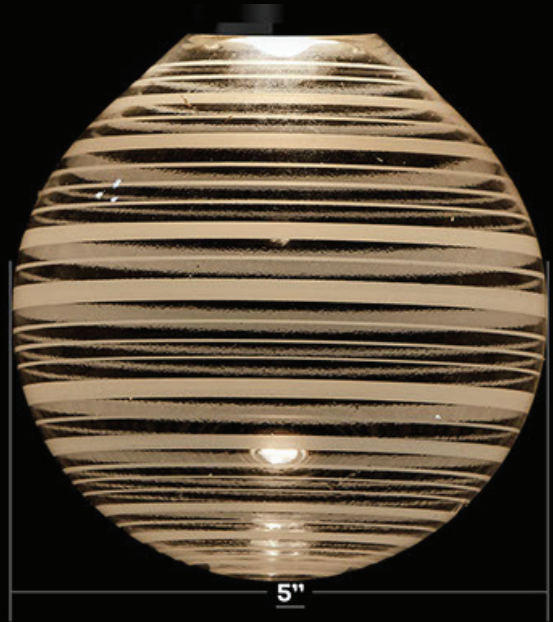
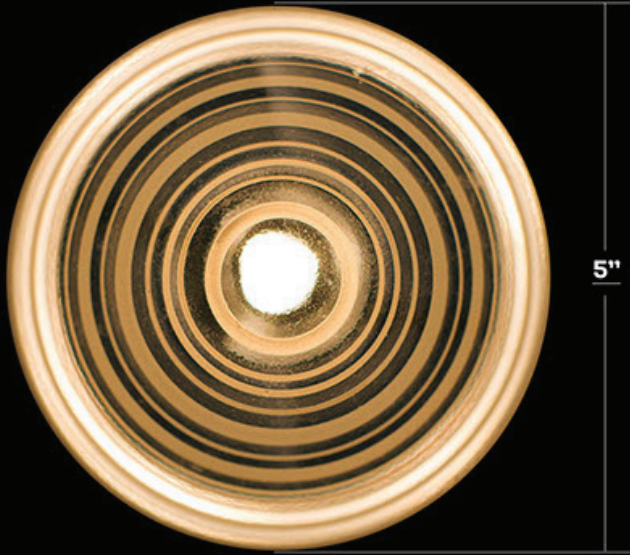


4000K



5000K

ANGELA



1900K



2700K



3000K



3500K



4000K



5000K

GABY



1900K



2700K



3000K



3500K

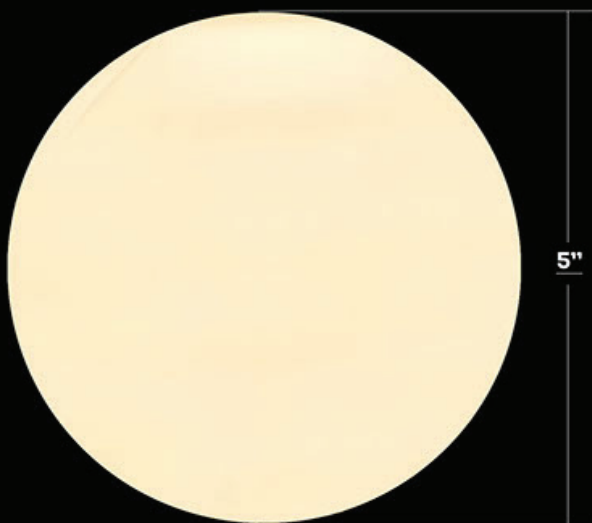


4000K



5000K

TONI



1900K



2700K



3000K



3500K



4000K



5000K

VICTORIA



1900K



2700K



3000K



3500K

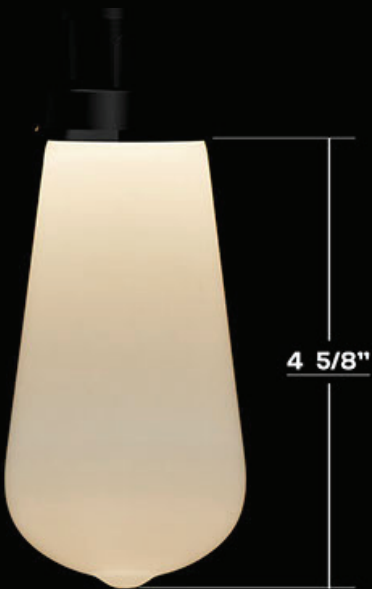


4000K



5000K

LAURA



1900K



2700K



3000K



3500K

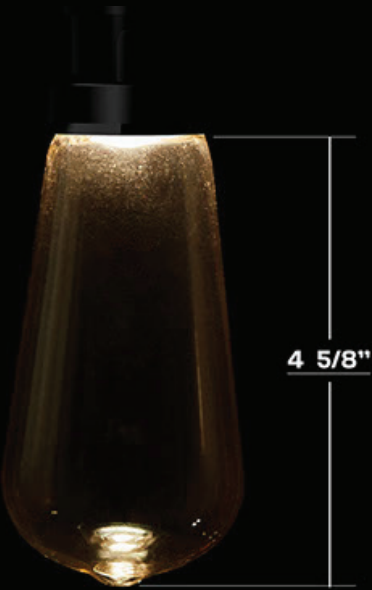


4000K



5000K

BRENDA



1900K



2700K



3000K



3500K

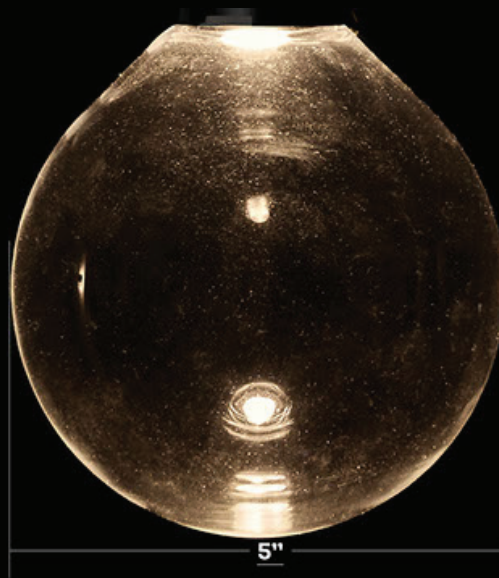


4000K



5000K

LUCIA



1900K



2700K



3000K



3500K



4000K



5000K

SUSAN



1900K



2700K



3000K



3500K

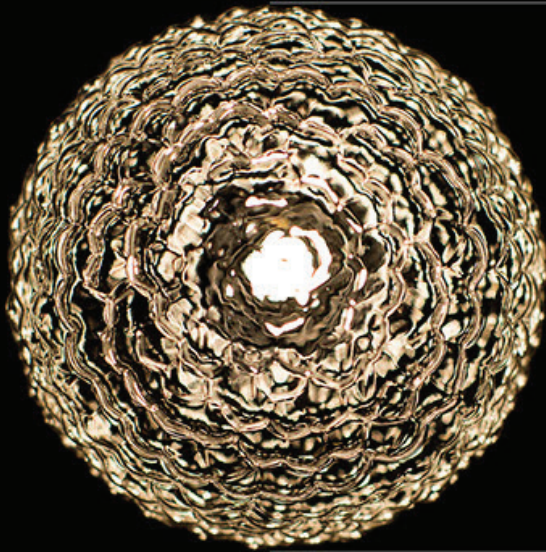


4000K



5000K

ANA



5"



5"



1900K



2700K



3000K



3500K



4000K



5000K



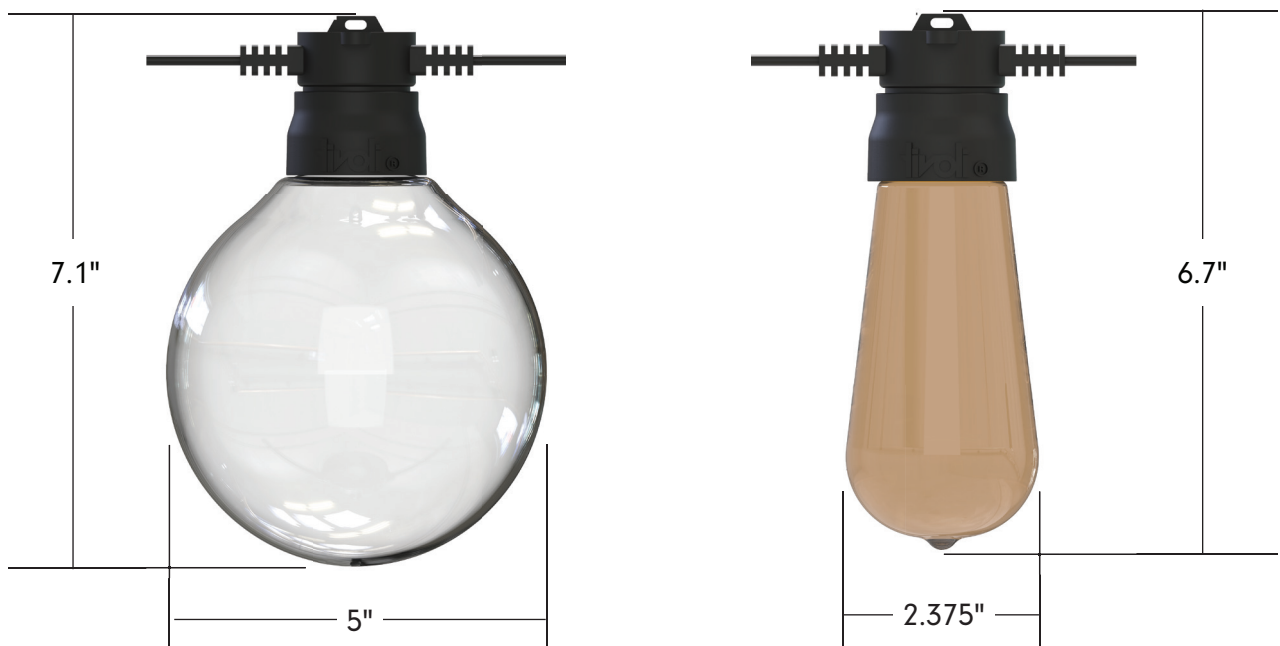
Project: _____ TYPE: _____

Product Features

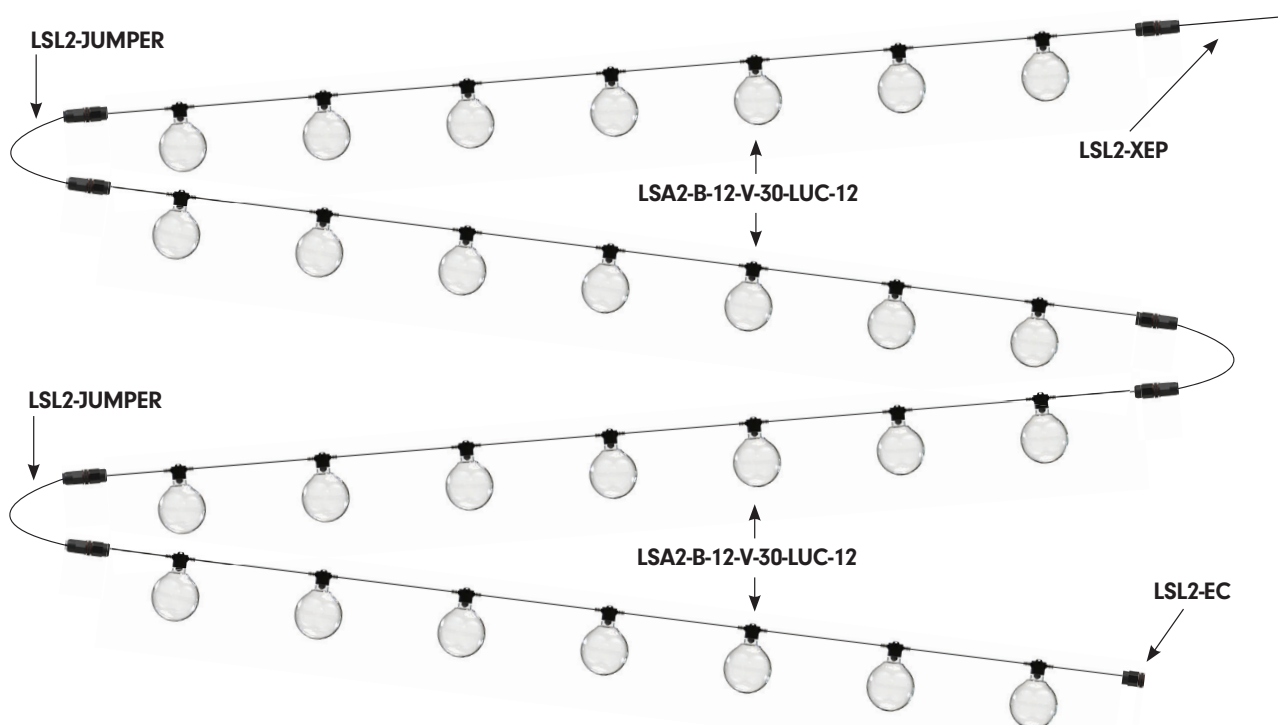
- The next evolution of ADAPT delivers a robust specification-grade strand with factory molded standard spacing for consistent quality from start to finish
- Litesphere ADAPT 2.0 design provides optional suspended mounting or a twist-off cap for surface applications
- 12V DC Low voltage system for long runs
- Socket and cord color available in black or white
- Proprietary ADAPT screw base fitting
- Silicone-coated ADAPT glassware for assisting with shatter resistance
- IP67
- cULus
- 3 Year warranty



Dimensions



System Configuration Example



Strand Order Guide

Note: For suspension application, a catenary cable is required for proper installation. Please contact Tivoli for recommendations on unique mounting applications.

Product	Wire	Spacing	LED Type	LED Color	Globe	Light Shade*	Voltage
LSA2	-	-	-	-	-	-	12
Litesphere ADAPT 2.0	B Black W White**	12 12" OC 18 18" OC 24 24" OC 36 36" OC 48 48" OC	V Very High Output	19 1900K 27 2700K 30 3000K 35 3500K 40 4000K 50 5000K AM Amber RB Royal Blue RD Red GN Green YL Yellow	ANA Ana VIC** Victoria GAB Gaby BRE Brenda LAU** Laura GIN Gina ANG Angela KAT Katie SUS** Susan TON** Toni LUC** Lucia CG** Varied Globes	Y Yes N No	12 12V DC

*Light Shade are optional. Consult factory for lead time and available style and sizes - see page 13

**Consult Factory for MOQ and Lead Time.

Power Lead Order Guide

LSL2-XEP-X-XX

X = B (Black), W (White)

XX = 05 (5'), 10 (10'), 15 (15'), 20 (20'), 25 (25')

For custom length consult factory

Figure A

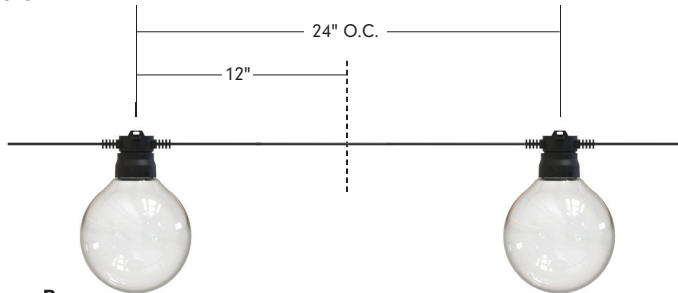


Figure B

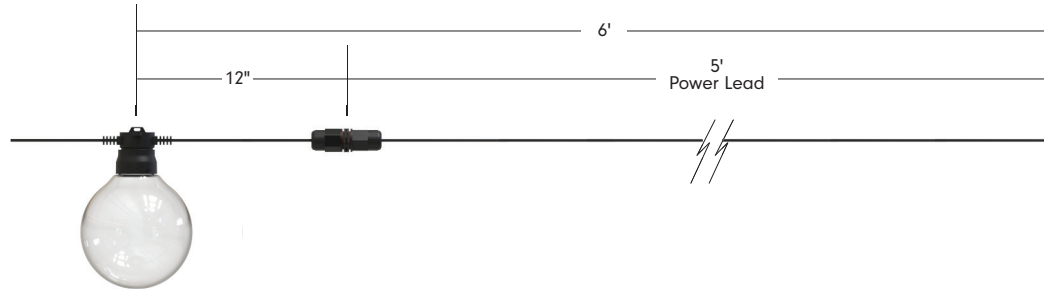


Figure A - All Litesphere ADAPT 2.0 are evenly cut between globes according to specified spacing.
Figure B - Power leads are added to the end cut, extending the total length of the power lead.

Jumper Order Guide

LSL2-JUMPER-X-XX

X = B (Black), W (White)

XX = 05 (5'), 10 (10')

For custom length, consult factory

Figure A

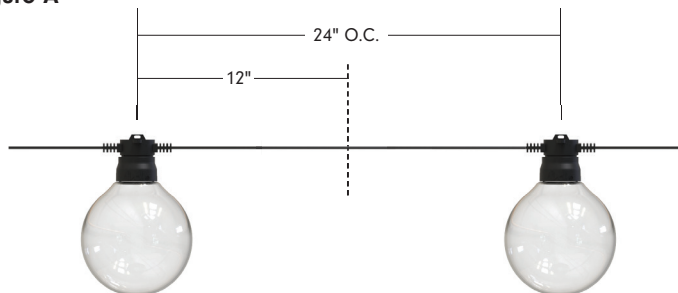


Figure B

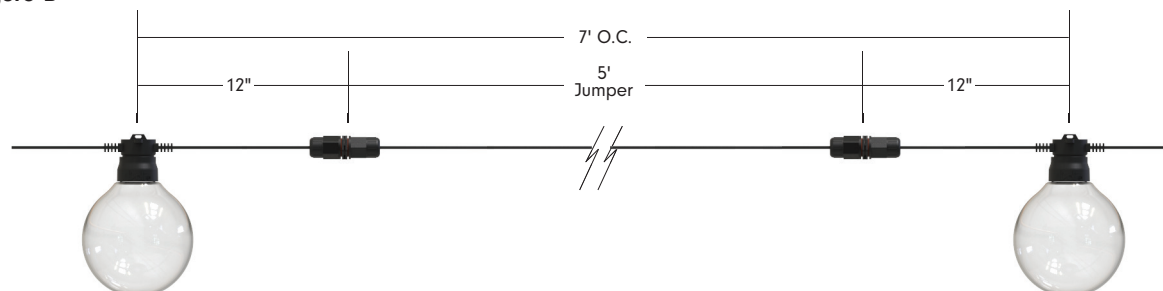


Figure A - All Litesphere ADAPT 2.0 are evenly cut between globes according to specified spacing.
Figure B - Jumpers are added between the cuts, extending the total length of wire between globes.

Specifications

Output - Very High Output					
On-Center Spacing	12"	18"	24"	36"	48"
Lumens/ft	90.2	60	45	30	N/A
Watts/ft	.96	.64	.48	.32	.24
Maximum Electrical Run	55'	70'	80'	90'	90'
Weights (G125 Globe)					
On-Center Spacing	12"	18"	24"	36"	48"
lb/ft	0.59	0.55	0.51	0.47	0.44
lb/ft with catenary cable	0.61	0.57	0.53	0.49	0.46
Weights (ST19 Globe)					
On-Center Spacing	12"	18"	24"	36"	48"
lb/ft	0.49	0.45	0.41	0.37	0.34
lb/ft with catenary cable	0.51	0.47	0.43	0.39	0.36
Electrical					
Input Voltage	12V DC				
Power Consumption (W/LED)	0.96				
Control					
Control System	0-10V, ELV, MLV, DMX 512 (Dim to 1% with an Infinity power supply and a 0-10V Lutron Diva dimmer)				
Physical					
Dimensions	7.1" H x 5" W (G125), 6.7" H x 2.375" W (ST19)				
Socket Housing	PVC				
American Wire Gauge	14 AWG				
Globe	Glass (Shatter resistance assist with silicone coating - Glass may still break under certain conditions)				
Mounting	Surface Mount, Suspended				
Operating Temperature	-40°C to 65°C (-40°F to 149°F)				
Certification and Testing					
Certification	cULus				
Environment	Wet Location				
Lumen Maintenance (L70) Hours	70,000				
IP Rating	IP67				
Warranty	3 Years				

Mounting Options

SURFACE/FLUSH

For surface mount applications, remove the top suspension-plate by turning counter-clockwise until off. Place socket flush against the desired surface and mount using proper screws according to substrate.



SUSPENDED

Suspended mounting will use a combination of LS-CABLE, LS-LOCK with LS-UVZP. Tension the cable wire with our LS-TT (Tension Tool) for desired sag (Please adhere to local city code for suspended application).

Note: For suspension application, a catenary cable is required for proper installation. Please contact Tivoli for recommendations on unique mounting applications.



Mounting Accessories



LS-CABLE-60 Catenary Cable Kit - 60'
(1/8" Stainless Steel cable includes 2 cable locks for use with loads up to 200lbs)

LS-CABLE-110 Catenary Cable Kit - 110'
(1/8" Stainless Steel cable includes 2 cable locks for use with loads up to 200lbs)

LS-CABLE-500 Catenary Cable Kit - 500'
(1/8" Stainless Steel cable for use with loads up to 200lbs)



LS-UVZP-BK-50

Black
50 pc Bag set. UV resistant, heavy duty ties.
Maximum weight up to 100 lbs./per tie.



LS-LOCK-X Cable Lock

X = 2 (2 Locks), 4 (4 locks) Includes (1) cable release key.
Cable Lock for 1/8th inch cable, Heavy-duty lockable fasteners support loads up to 200 lbs. Can be easily adjusted without the use of tools.



LS-TT

Catenary Cable Tensioning Tool up to 880lbs with minimal effort due to the 6:1 gear drive mechanism. Integral torque gauge controls the load applied to the wire, giving consistent tension every time and optimizing the life of the wire.

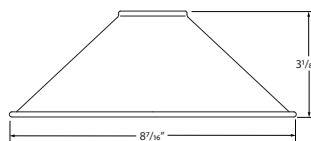


LS-UVZP-BK-30

Black
30 pc Bag set. UV resistant, heavy duty ties.
Maximum weight up to 100 lbs./per tie.

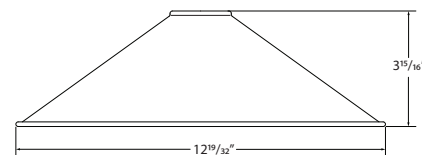
Light Shades

HAT



SHADE-HT-BK-BK-8

Light Shade - HAT
8.3" Black Top, Black Bottom
Weight: 0.38 lb



SHADE-HT-BK-BK-13*

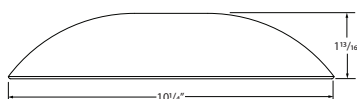
Light Shade - HAT
12.6" Black Top, Black Bottom
Weight: 1.06 lb

SHADE-HT-BK-CO-13 *

Light Shade - HAT
12.6" Black Top, Copper Bottom
Weight: 1.06 lb

*Consult factory for lead time and MOQ

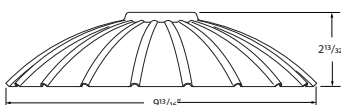
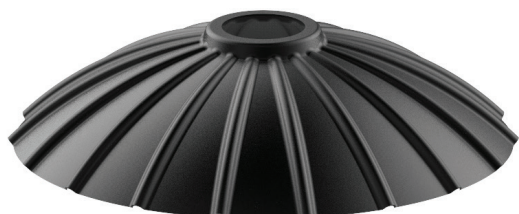
DISH



SHADE-DS-BK-BK-10

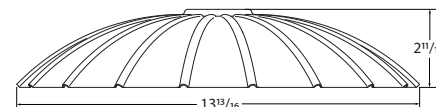
Light Shade - DISH
10.2" Black Top, Black Bottom
Weight: 0.72 lb

FLOWER



SHADE-FL-BK-BK-10

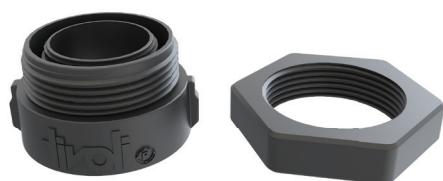
Light Shade - FLOWER
9.8" Light Shade, Black Top, Black Bottom
Weight: 0.54 lb



SHADE-FL-BK-BK-13

Light Shade - FLOWER
13.8" Light Shade, Black Top, Black Bottom
Weight: 1.1 lb

Accessories



SHADE-ADP-LSA2-XX-01 ADAPT 2.0 Light Shade Adapter

XX = BK (Black), WH (White)
PVC Black Adapter - Sold individually.

SHADE-ADP-LSA2-XX-25 ADAPT 2.0 Light Shade Adapter

XX = BK (Black), WH (White)
PVC Black Adapter Kit - Sold in packs of 25

SHADE-ADP-LSA2-XX-50 ADAPT 2.0 Light Shade Adapter

XX = BK (Black), WH (White)
PVC Black Adapter Kit - Sold in packs of 50

Replacement Parts

G125 Globe (Weight: 4 oz./ea.)



Ana
LSA-ANA



Angela
LSA-ANG



Gina
LSA-GIN



Gaby
LSA-GAB



Katie
LSA-KAT



Susan*
LSA-SUS



Toni*
LSA-TON



Lucia*
LSA-LUC



Victoria*
LSA-VIC

*Consult Factory for MOQ and Lead Time.

ST19 Globe (Weight: 1.6 oz./ea.)



Laura*
LSA-LAU



Shatter Resistant
Silicone Coating

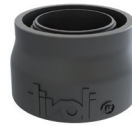


Brenda
LSA-BRE

Replacement Parts



Very High Output



LSL-19-V-12

12V Wedge base
1900K

LSL-27-V-12

12V Wedge base
2700K

LSL-30-V-12

12V Wedge base
3000K

LSL-35-V-12

12V Wedge base
3500K

LSL-40-V-12

12V Wedge base
4000K

LSL-50-V-12

12V Wedge base
5000K

LSL-AM-V-12

12V Wedge base
Amber

LSL-RD-V-12

12V Wedge base
Red

LSL-RB-V-12

12V Wedge base
Royal Blue

LSL-GN-V-12

12V Wedge base
Green

LSL-YL-V-12

12V Wedge base
Yellow

LSL2-EC-X

X = B (black), W (white)

Litesphere 2.0 End-Cap

Weight: 0.0375 lb
sold each

LSA2-GA-X

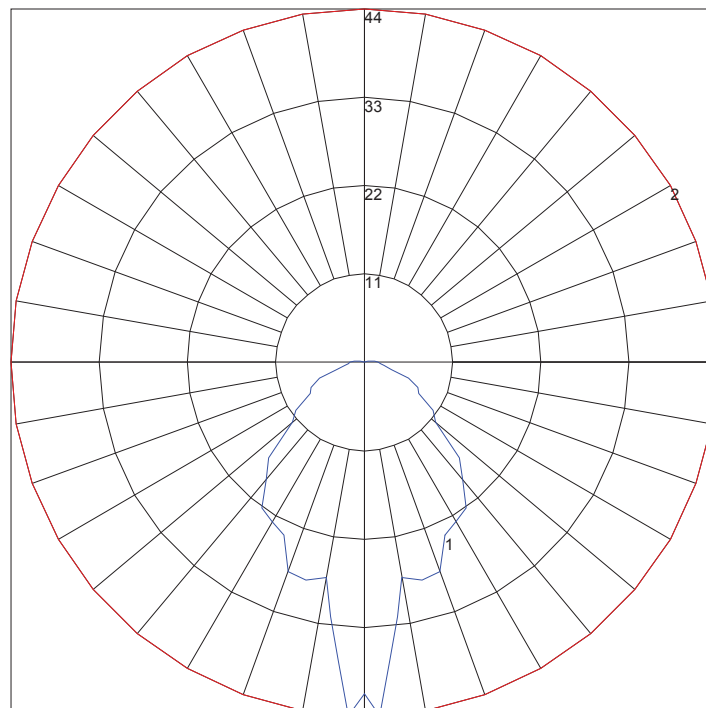
X = B (black), W (white)

Litesphere ADAPT 2.0

Globe Adapter
sold each

Photometrics

Based on 2700K LED with Lucia globe



Maximum Candela = 44.19 Located At Horizontal Angle = 0, Vertical Angle = 2.5

1 - Vertical Plane Through Horizontal Angles (0 - 180) (Through Max. Cd.)

2 - Horizontal Cone Through Vertical Angle (2.5) (Through Max. Cd.)

Power Supplies

INFINITY - MLV / ELV / 0-10V / PWM / TRIAC

Dim to 1% with a 0-10V Lutron Diva dimmer (by others)

DESCRIPTION	CAT NO	APPLICATION	PRIMARY VOLTAGE	SECONDARY VOLTAGE	CIRCUIT BREAKERS	MAX LOAD	MIN LOAD	CIRCUIT CAPACITY
Infinity Series Class 2 Transformer	INF-J-30-1-2.5-12	Indoor / Outdoor	100 - 277V AC	12V DC	1	30W	3W	2.5A
	INF-J-60-1-5-12				1	60W	6W	5A
	INF-J-180-3-5-12				3	3x60W	3x6W	3x5A
	INF-J-300-5-5-12				5	5x60W	5x6W	5x5A

ADNM - NON DIMMING

DESCRIPTION	CAT NO	APPLICATION	PRIMARY VOLTAGE	SECONDARY VOLTAGE	CIRCUIT BREAKERS	MAX LOAD	CIRCUIT CAPACITY
ADNM Series Class 2 Transformer	ADNM-60-1-5-12-D	Indoor / Outdoor	100-277V AC 50/60 HZ	12V DC	1	60W	5A
	ADNM-80-1-5-12-D				1	60W	5A
	ADNM-150-2-5-12-D				2	2x60W	2x5A
	ADNM-240-3-5-12-D				3	3x60W	3x5A
	ADNM-320-4-5-12-D				4	4x60W	4x5A

ADNM - 0-10V DIMMING

DESCRIPTION	CAT NO	APPLICATION	PRIMARY VOLTAGE	SECONDARY VOLTAGE	CIRCUIT BREAKERS	MAX LOAD	CIRCUIT CAPACITY
ADNM Series Class 2 Transformer	ADNM-60-1-5-12-DOT	Indoor / Outdoor	100-277V AC 50/60 HZ	12V DC	1	60W	5A
	ADNM-80-1-5-12-DOT				1	60W	5A
	ADNM-150-2-5-12-DOT				2	2x60W	2x5A
	ADNM-240-3-5-12-DOT				3	3x60W	3x5A
	ADNM-320-4-5-12-DOT				4	4x60W	4x5A

ADNM - DMX SINGLE ADDRESS

DESCRIPTION	CAT NO	APPLICATION	PRIMARY VOLTAGE	SECONDARY VOLTAGE	CIRCUIT BREAKERS	MAX LOAD	CIRCUIT CAPACITY
ADNM Series Class 2 Transformer	ADNM-60-1-5-12-DIN	Indoor / Outdoor	100-277V AC 50/60 HZ	12V DC	1	60W	5A
	ADNM-80-1-5-12-DIN				1	60W	5A
	ADNM-150-2-5-12-DIN				2	2x60W	2x5A
	ADNM-240-3-5-12-DIN				3	3x60W	3x5A
	ADNM-320-4-5-12-DIN				4	4x60W	4x5A

ADNM - DMX MULTI ADDRESS

DESCRIPTION	CAT NO	APPLICATION	PRIMARY VOLTAGE	SECONDARY VOLTAGE	CIRCUIT BREAKERS	MAX LOAD	CIRCUIT CAPACITY
ADNM Series Class 2 Transformer	ADNM-150-2-5-12-DIN-2	Indoor / Damp	100-277V AC 50/60 Hz	12V DC	2	2x60W	5A
	ADNM-240-3-5-12-din-3				3	3x60W	3x5A

Controls

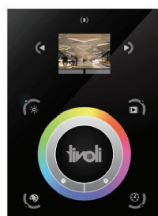


Touchscreen

TVOQ-1-WH

White

16 DMX channel, 16 scene,
4 zone, glass touch screen

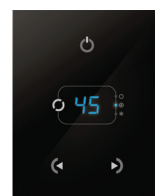


Touchscreen

TVOQ-10-XX-7

XX = BK (Black), WH (White)

1024 DMX channel, 500 scene,
10 zone, glass touch screen



Touchscreen

TVOQ-2-BK

Black

512 DMX channel, 99 scene,
1 zone, glass touch screen